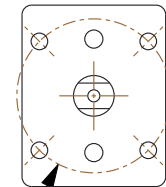


TOP FLANGE



ISO 5211-F10

NOTES:

1. CERTIFIED TO MEET THE REQUIREMENTS OF: NSF/ANSI 61, NSF/ANSI 372, MSS SP-72, FED. SPEC. WW-V-35 AND AWWA C507-99 (PROOF OF DESIGN).
2. FACE TO FACE: ANSI B16.10.
3. A536 GRADE 65-45-12 DUCTILE IRON BODY.
4. PRESSURE: 150 PSI WSP / 300 PSI WOG.
5. TEMPERATURE: 366°F.
6. WEIGHT: 78 LBS.



4940 Peachtree Industrial Blvd, #390
Berkeley Lake, GA 30071, USA
Ph: 800 645 0101

This file and any associated information and specifications are provided for reference and evaluation purposes only, and is subject to change without notice. AMERICAN VALVE makes no representations, warranties or guarantees as to the appropriateness, accuracy, completeness, or suitability for any purpose, of the file, information or specifications. You are solely responsible for the use of the file, information or specifications.

ILH-4000D-040

4000D 4" Ductile Iron Flanged
Raised Face - Full Port Ball Valve 150#

SCALE	NTS
UNIT	INCH
SHEET	1 of 1